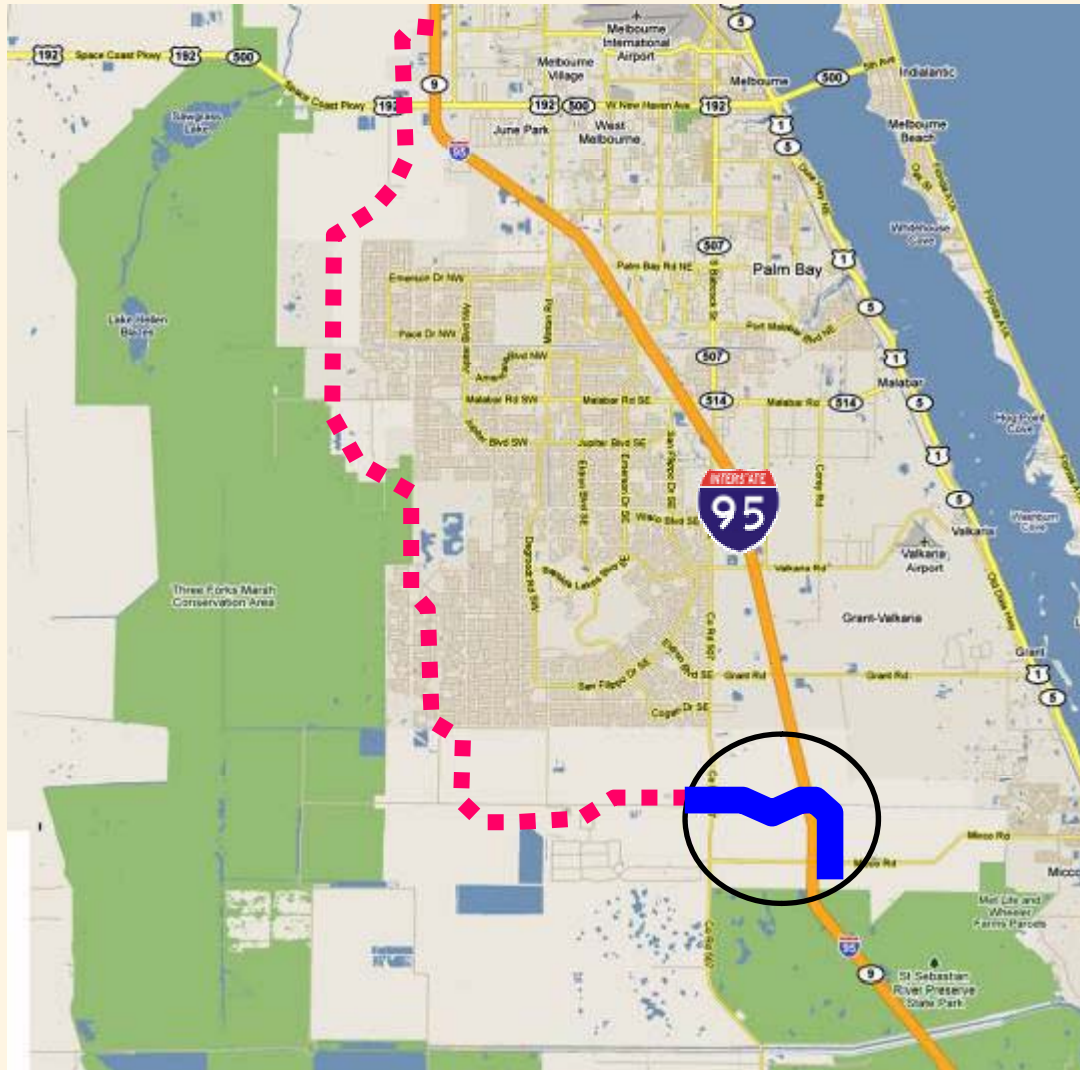




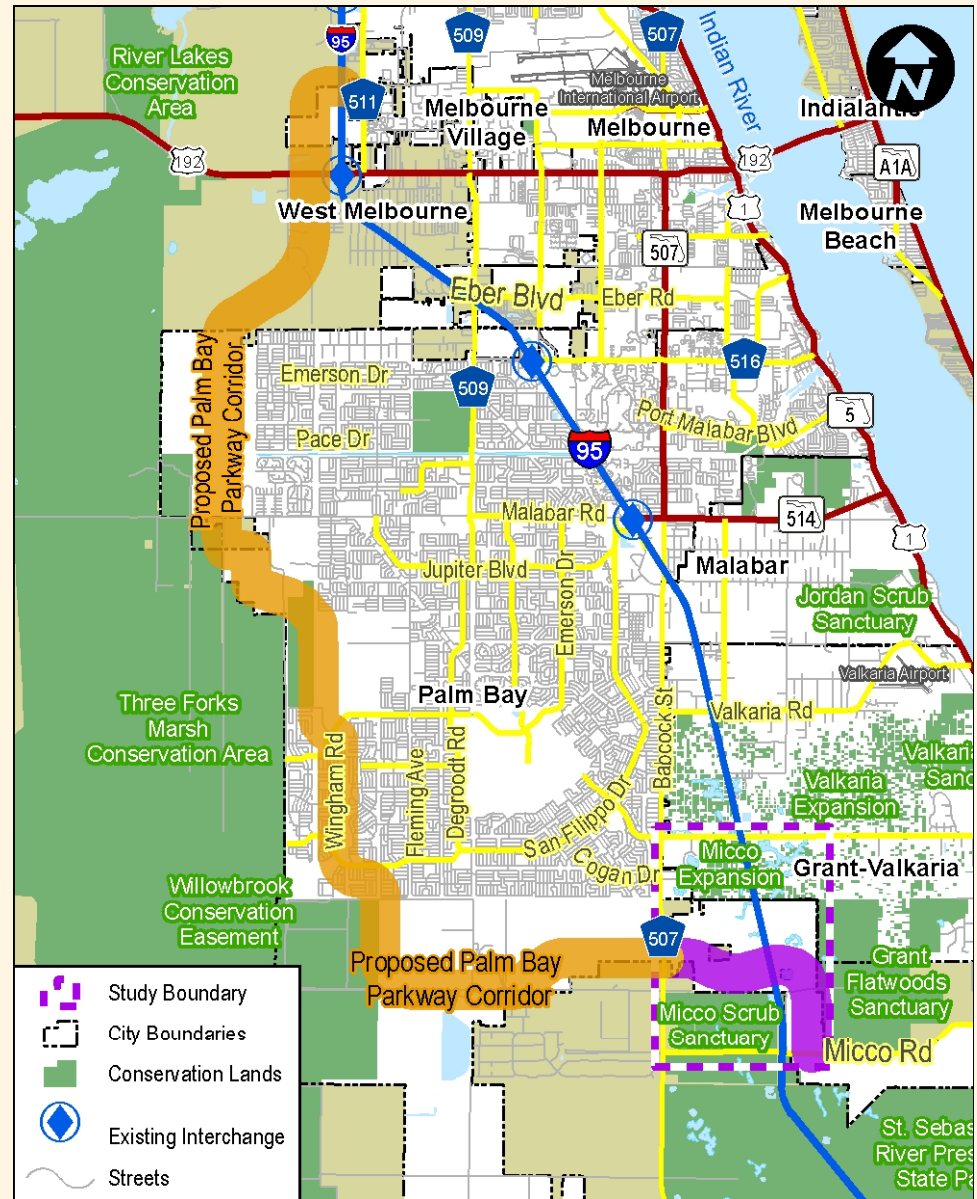
at the Palm Bay Parkway Southern Interchange Project Development & Environment (PD&E) Study



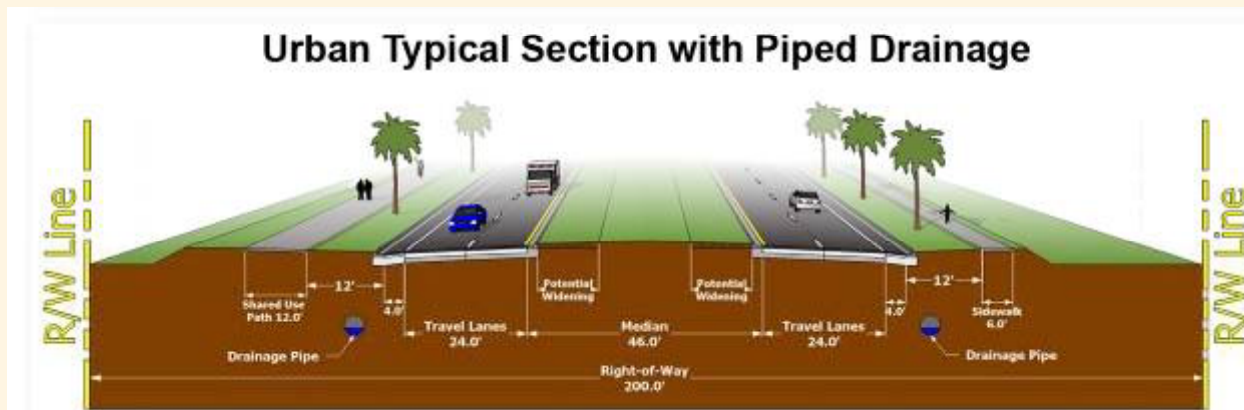
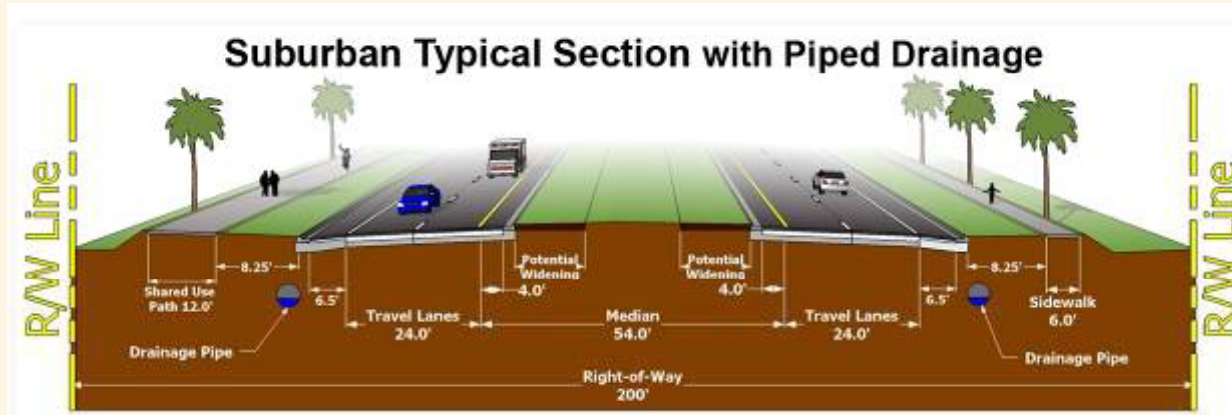
Space Coast TPO – July 2011

Project Purpose & Need

- › System Linkage
- › Transportation Demand
- › Social & Economic Demand
- › Operational Capacity
- › Safety
- › Emergency Response

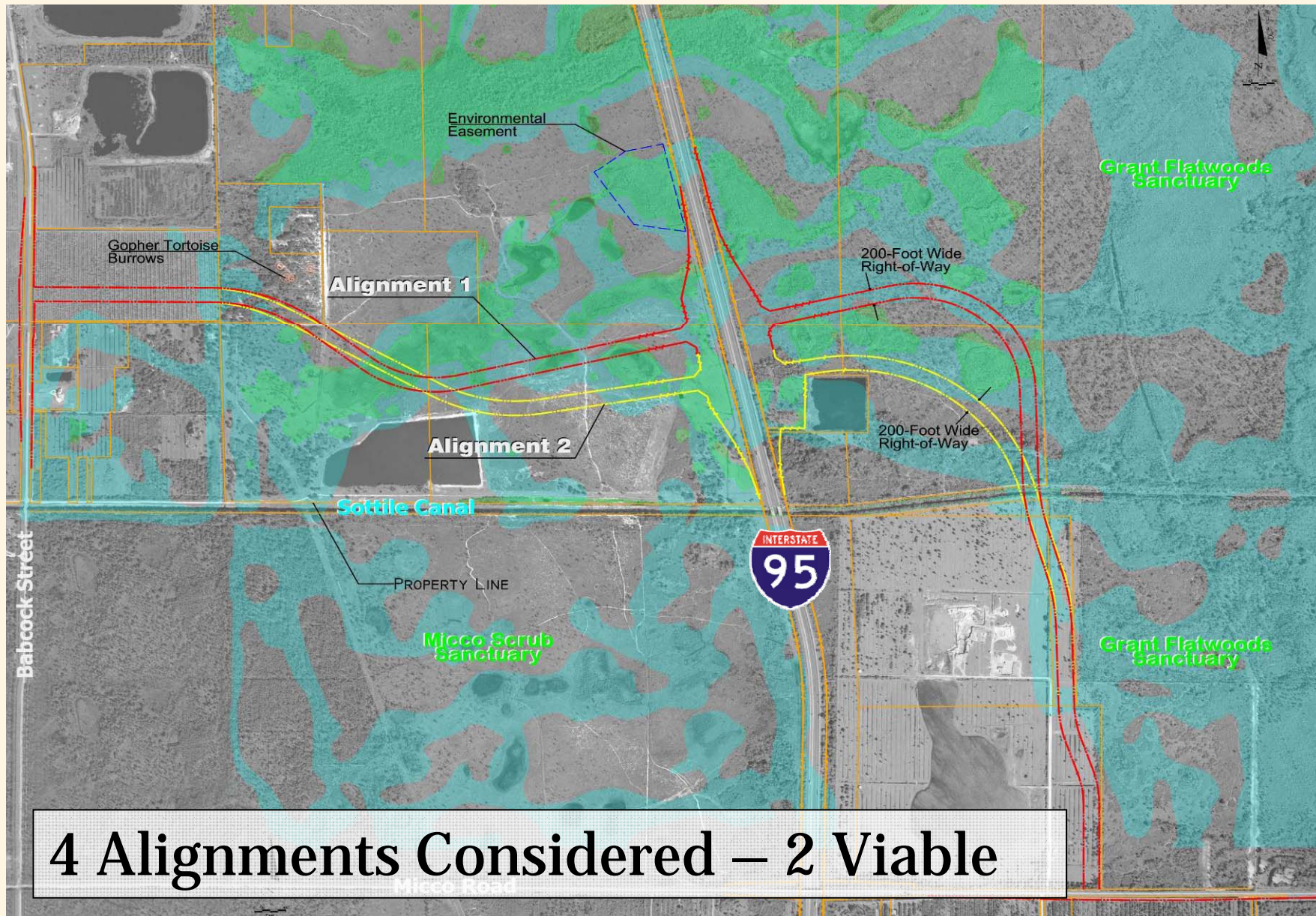


Proposed Typical Sections



Micco Road

Alignment Alternatives 1&2



Compressed Diamond Interchange Alternative

- › 2 Lane EB Left to I-95 NB (1000 VPH)
- › 8 lanes on Overpass Bridge
- › Least Land Area
- › Intersections Projected LOS “D”



Spread Diamond Interchange Alternative

- › 2 Lane EB Left to I-95 NB (1000 VPH)
- › 6 lanes on Overpass Bridge
- › Most Land Area
- › Intersections Projected LOS “D”



PARCLO Interchange Alternative

- › Loop Ramp to Accommodate (1000 VPH) EB Left Turn
- › 7 Lanes on Overpass Bridge
- › Land Area
 - › < Spread Diamond
 - › > Compressed Diamond
- › Intersections Projections
 - › LOS “D” (West)
 - › LOS “B” (East)



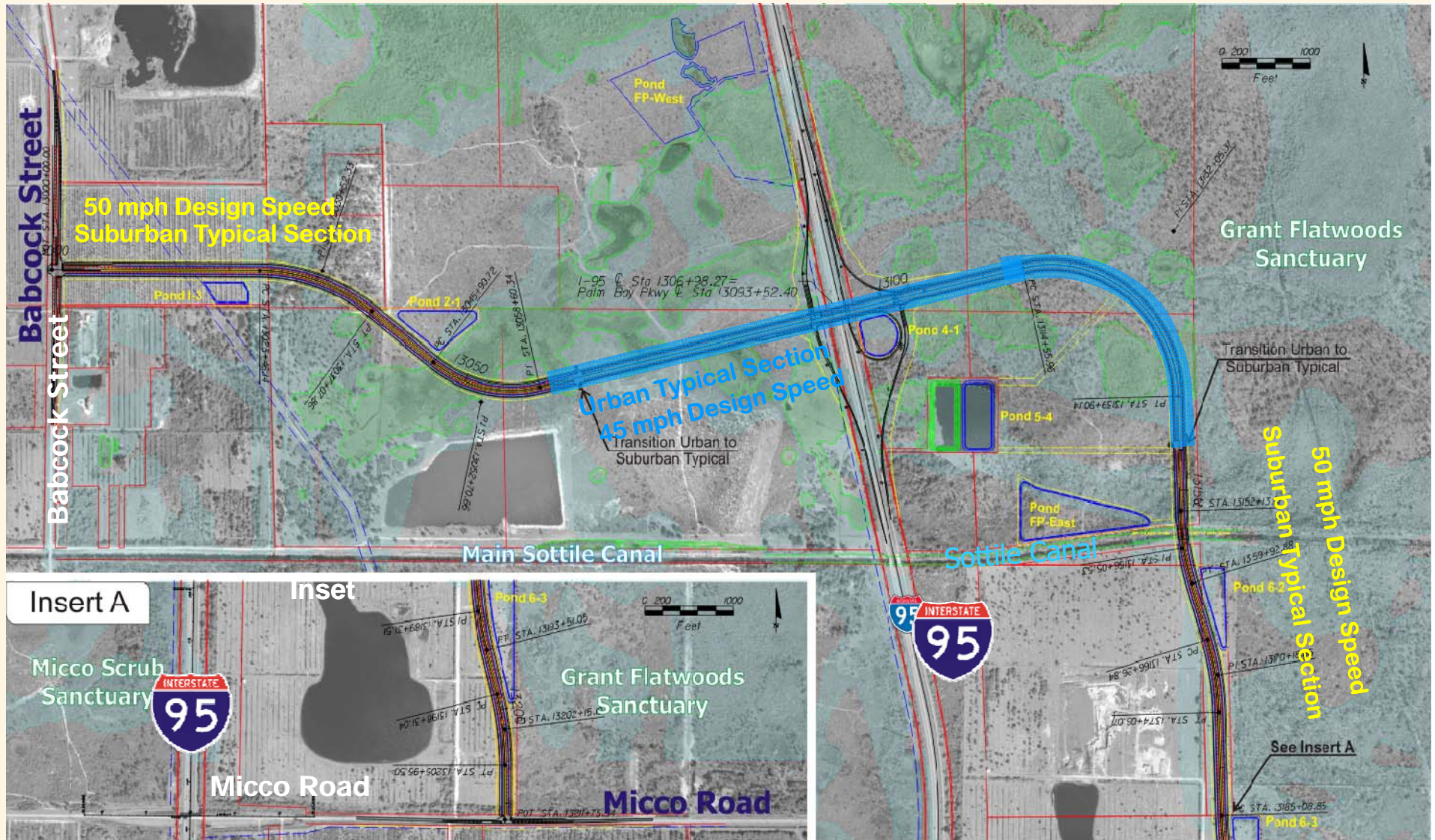
Evaluation Matrix

Evaluation Criteria			Alignment 1			
			Compressed Diamond	Spread Diamond	Partial Cloverleaf	
Engineering	Alignment Length (miles)		4.00	4.00	4.00	
	Project Cost (Year 2010 Million \$)		\$89.4 - \$95.2	\$87.5 - \$93.4	\$90.3 - \$96.1	
	Cost Elements	Construction Cost Estimates	Urban	\$62.8	\$57.8	\$63.2
			Suburban (Piped)	\$64.9	\$59.9	\$65.3
			Suburban (Swale)	\$59.0	\$54.0	\$59.4
		Construction Engineering & Inspection		\$9.4	\$8.7	\$9.5
		Design		\$5.0	\$4.6	\$5.1
		Mitigation Cost		\$1.7	\$3.0	\$1.7
		Potential ROW Costs		\$14.2	\$17.2	\$14.6
	ROW Acquisition Area (acres)		148.7	186.1	153.7	
Traffic Operations (AM/PM Level of Service)		C/D D/C	C/D D/C	C/D B/B		
Environmental	Threatened/Endangered Species Observed		None	None	None	
	Total Wetland Impact Area* (acres)		16.6	30.0	16.7	
	Floodplain Encroachment* (acres)		73.1	91.4	67.4	
	Relocations	Business	None	None	None	
		Residential	None	None	None	
	Archeological & Cultural Impacts		None	None	None	
	Contamination		None	None	None	
Socio-Economic Impacts		More Consistent with the Future Land Use Map approved by City of Palm Bay-July 8, 2010				

Evaluation Matrix

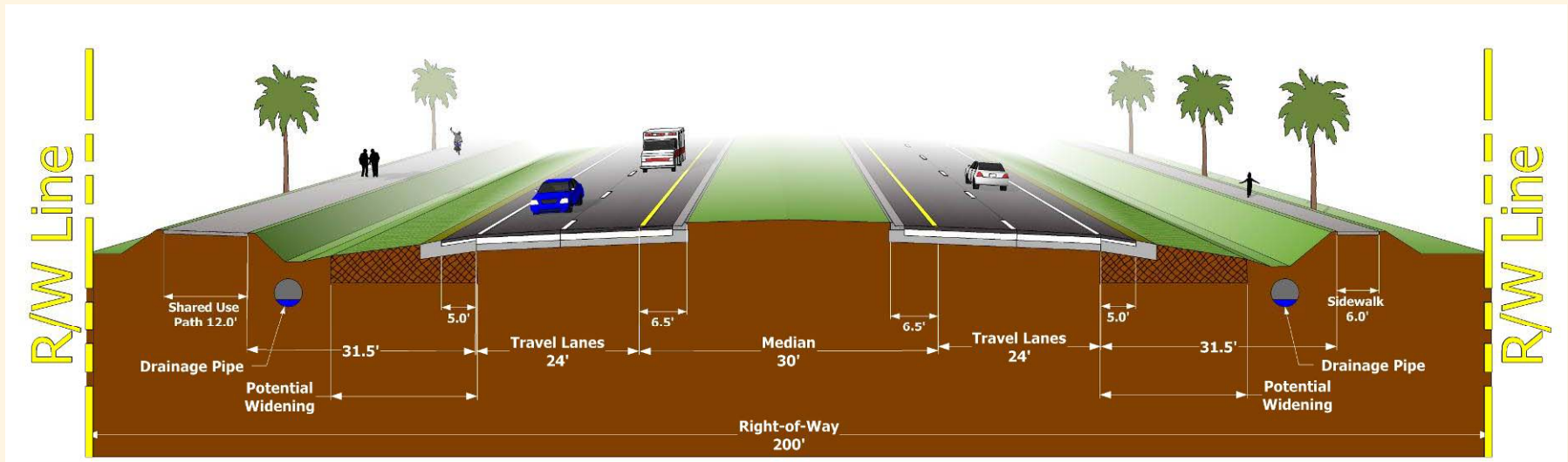
Evaluation Criteria		Alignment 2		
		Compressed Diamond	Spread Diamond	Partial Cloverleaf
Engineering	Alignment Length (miles)	3.75	3.75	3.75
	Project Cost (Year 2010 Million \$)	\$87.3 - \$92.8	\$85.6 - \$91.1	\$88.4 - \$93.9
	Construction Cost Estimates	Urban	\$61.1	\$57.1
		Suburban (Piped)	\$63.0	\$59.0
		Suburban (Swale)	\$57.5	\$53.5
	Construction Engineering & Inspection	\$9.2	\$8.6	\$9.3
	Design	\$4.9	\$4.6	\$4.9
	Mitigation Cost	\$1.7	\$2.5	\$2.0
	Potential ROW Costs	\$14.1	\$16.5	\$14.1
	ROW Acquisition Area (acres)	146.8	176.2	146.9
Environmental	Traffic Operations (AM/PM Level of Service)	C/D D/C	C/D D/C	C/D B/B
	Threatened/Endangered Species Observed	None	None	None
	Total Wetland Impact Area* (acres)	16.6	24.9	19.6
	Floodplain Encroachment* (acres)	61.0	81.4	60.4
	Relocations	Business	None	None
		Residential	None	None
	Archeological & Cultural Impacts	None	None	None
	Contamination	None	None	None
Socio-Economic Impacts		Less Consistent with the Future Land Use Map approved by City of Palm Bay-July 8, 2010		

Locally Preferred Alternative – Alignment 1 w/ PARCLO Interchange

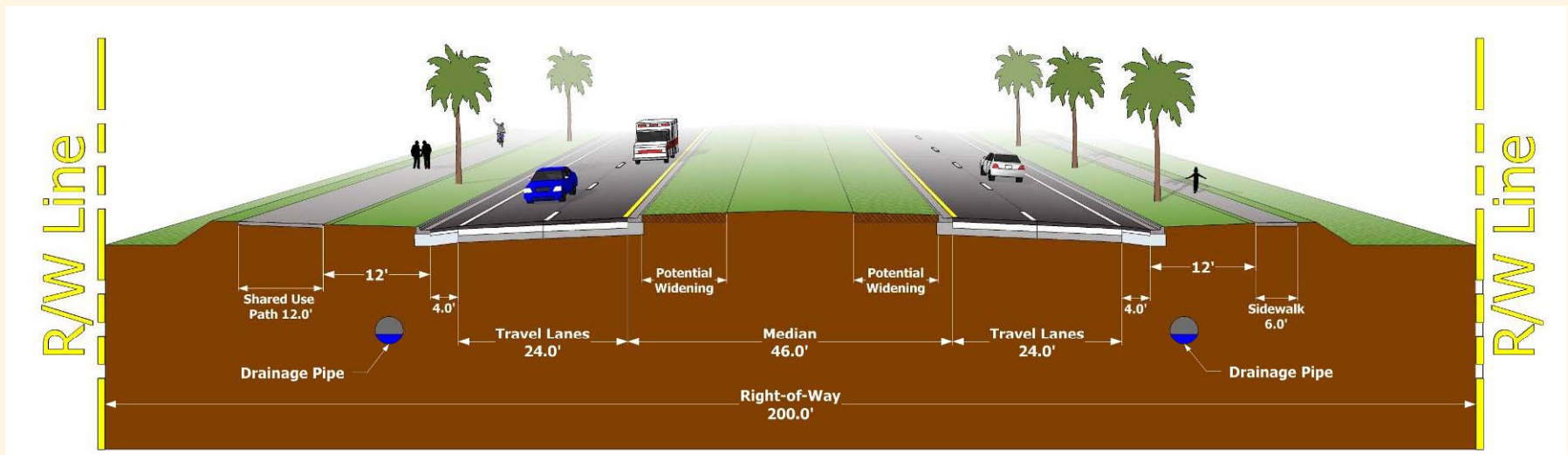


Recommended Palm Bay Parkway Typical Sections

Suburban Typical Section-50mph Design Speed



Urban Typical Section-45mph Design Speed



Locally Preferred Alternative

- Alignment 1 w/ PARCLO Interchange
 - *More Consistent with Local Comprehensive Plans*
 - *Lower Wetland Impacts*
 - *Slightly More Floodplain Impacts than Lowest Alternative*
 - *Approximately 3% more than Lowest Project Cost*
 - *Best Traffic Service*

Locally Preferred Alternative

• Engineering Refinements

– *Overall Cost \$87 Million*

- Palm Bay Parkway - \$44.5 Million
- Interchange - \$42.5 Million

– *Potential ROW Donations (included above)*

- Palm Bay Parkway - \$5.5 Million
- Interchange - \$14.8 Million

Environmental Evaluations

- Cultural / Historical Sites
 - *No Impacts / SHPO Concurrence Received*
- Contamination Sites
 - *No Impacts*
- Floodplains
 - *27 Acres of Compensating Storage Required for Floodplain Impacts*
- Wetlands
 - *24.3 Acres of Impacts*



Wildlife and Habitat

- » USFWS Coordination Ongoing
 - *No Affect*
 - Lakela's Mint
 - *May Affect but not Adversely Affect*
 - American Alligator
 - Carter's Mustard
 - Chaffseed
 - Everglades Snail Kite
 - Red Cockaded Woodpecker
 - *May Affect*
 - Audubon's Crested Caracara
 - Florida Scrub Jay
 - Eastern Indigo Snake
 - Wood Stork
- » Continued Coordination Required During Design & Permitting



Current Project Status

- » Environmental Documents
 - *Submitted to FHWA on June 2, 2011*
- » Awaiting Review Comments
- » Palmbayinterchange.com
 - *Updates*

Next Steps

- › Public Hearing – Late Summer / Early Fall
- › Finalize Study – Late 2011 / Early 2012
- › Federal Funds Available for Final Design
- › ROW and Construction Phases
 - *Currently Unfunded*